

That CAD Girl

jennifer dibona

website: www.thatcadgirl.com

email: thatcadgirl@aol.com

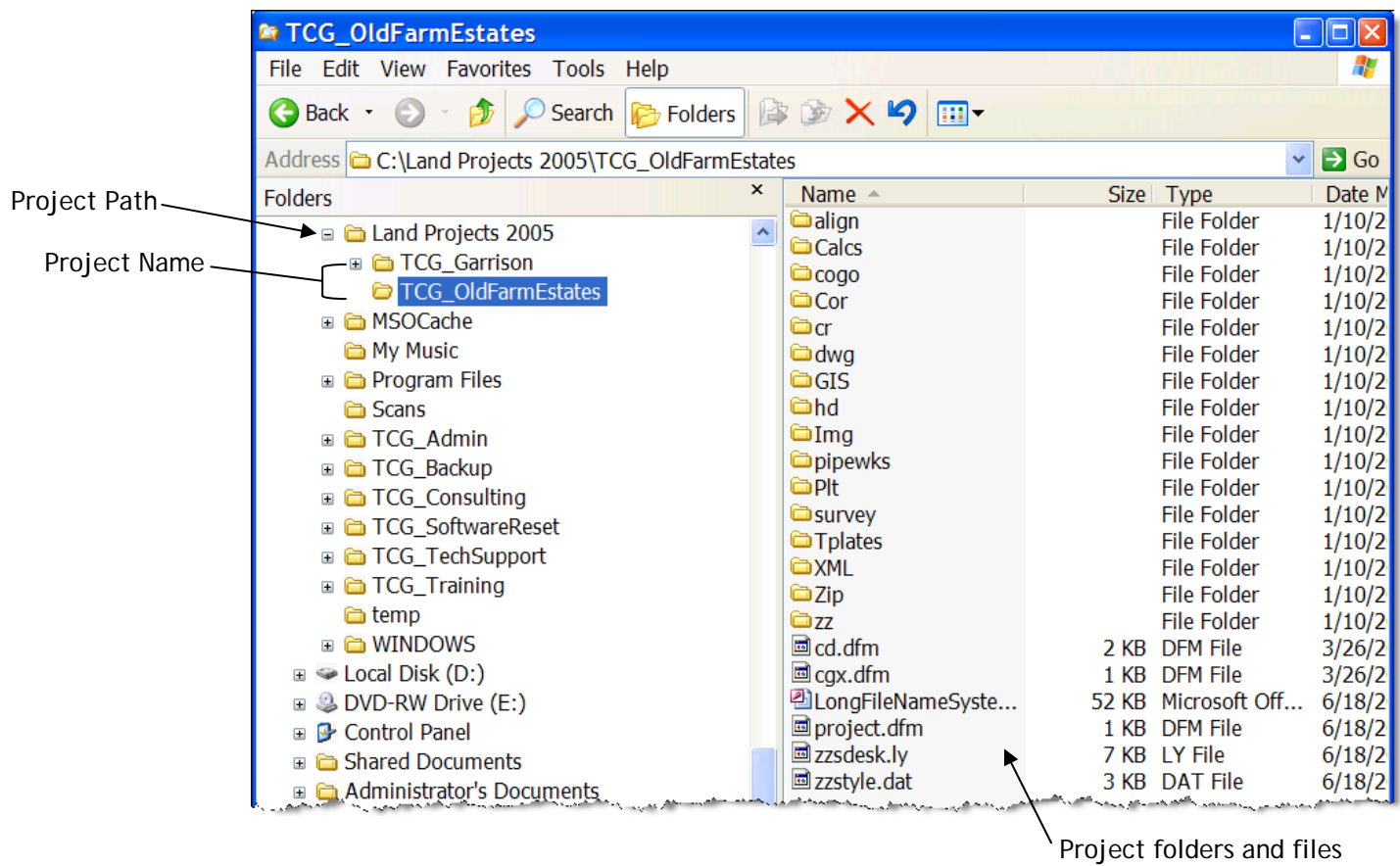
phone: (919) 417-8351

fax: (919) 573-0351

Land Desktop Project Management

When working in Land Desktop you are required to attach each drawing to an external database or a "project". The project is a collection of files and folders stored on your local hard drive or a network server.

During install, Land Desktop creates a folder called "Land Projects" as the default project location. This folder is called the "Project Path". Each project is contained in its own folder under the Project Path.

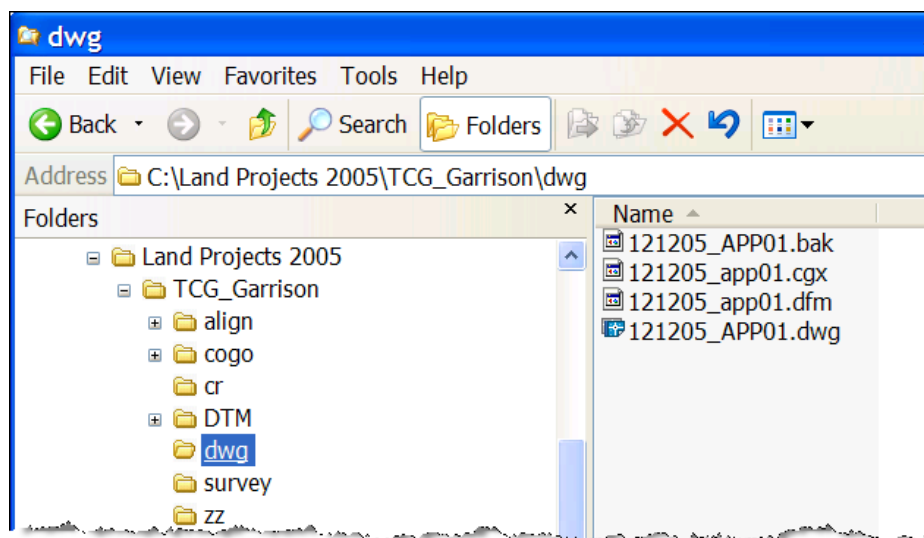
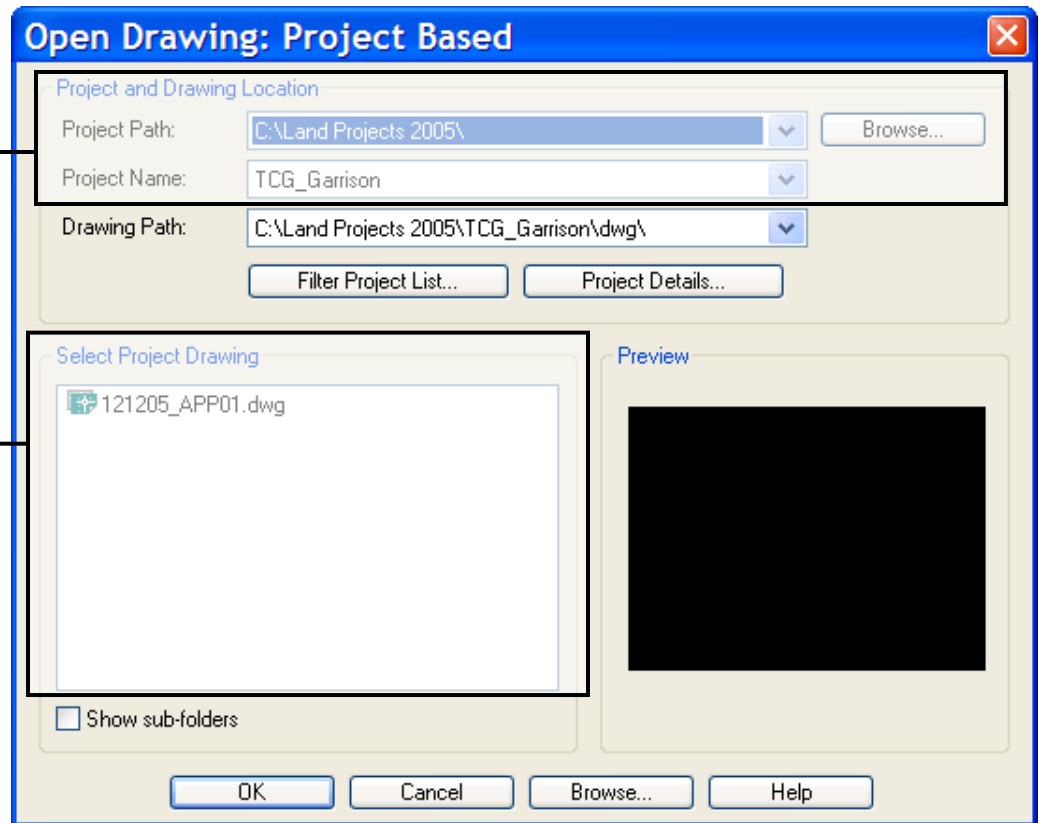


Creating a New or Opening a Project Based Drawing

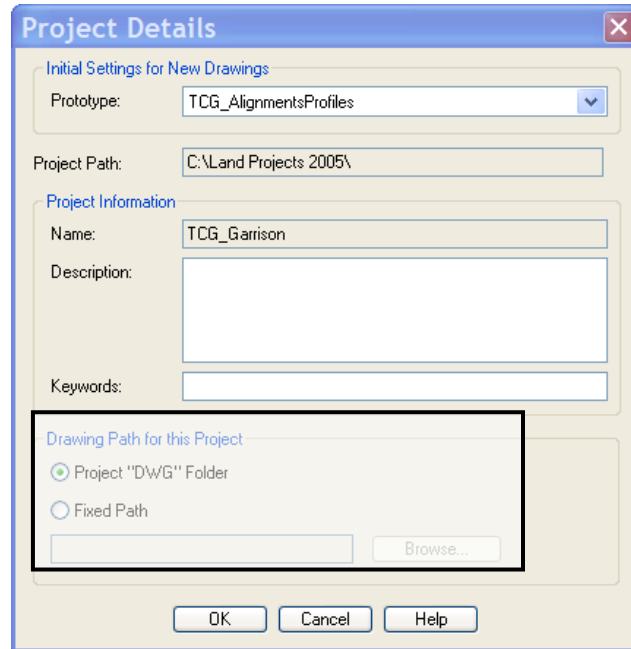
When starting a new or opening an existing drawing in Land Desktop, you navigate through a "Project Based" dialog box. The Open Drawing: Project Based dialog box seems complex, but makes sense if you understand the project path and folder structure outlined above.

Drawing Path

The drawings shown here
In the "Select Project Drawing"
box are the DWG files
contained in the path shown in
the "Drawing Path".



The drawing path for the project is originally specified when you create a new project and it can be changed by accessing Project Details. By default, new project details are saved in the “dwg” folder of the project.

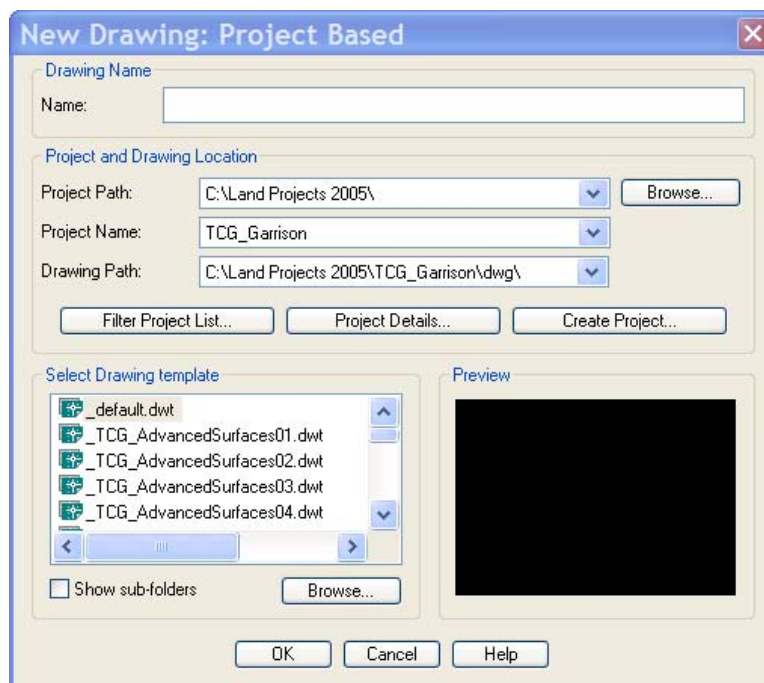


Creating a New Project Based Drawing

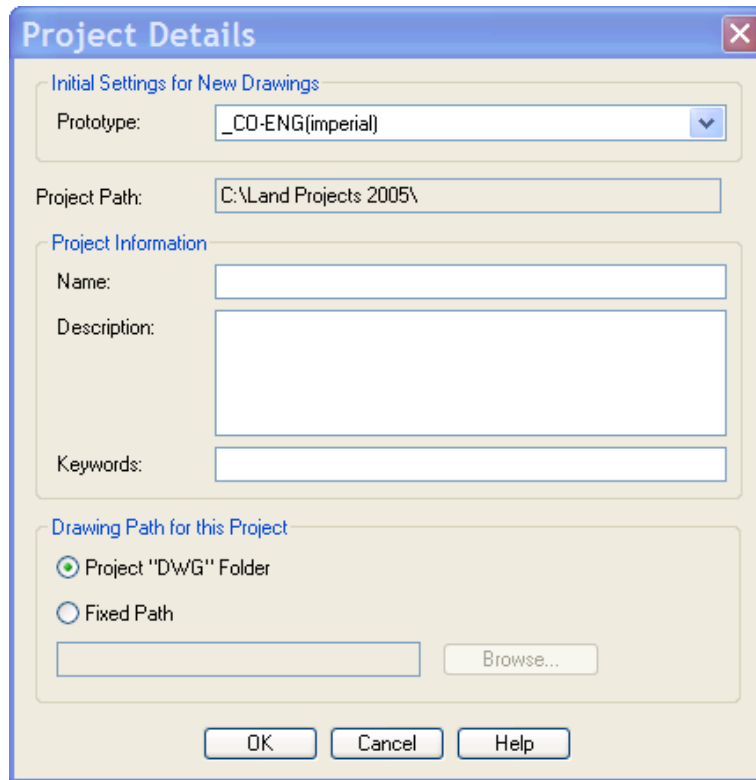
This dialog box is very similar to the Open Drawing: Project Based dialog. From this point, you have two options:

1. Create a new drawing attached to an existing project:
 - a. Enter a new drawing name at the top of the box
 - b. If desired, select a drawing template from the list at the bottom
 - c. Set the correct Project Path and Project Name

The new drawing will be saved in the location specified in the “Drawing Path” list box. You can change the Drawing Path by selecting the “Project Details” button.



2. Create a new drawing attached to a new project:
 - a. Set the correct "Project Path"
 - b. Select the "Create Project" button



- c. Select the desired "Project Prototype"
- d. Enter a name for the new project
- e. Set the "Drawing Path" for the new drawing
- f. Select "OK" to return to the "New Drawing: Project Based" dialog box
- g. Enter a new drawing name at the top of the "New Drawing: Project Based" box
- h. If desired, select a drawing template from the list at the bottom
- i. Make sure the correct Project Path and Project Name are set correctly.

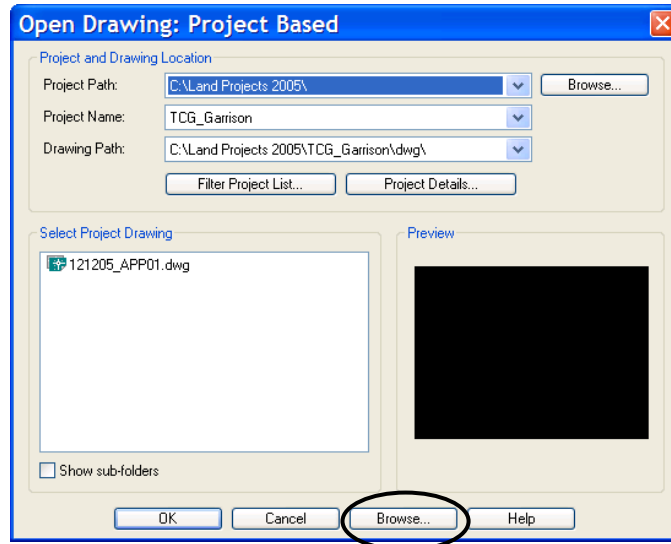
"_SCRATCH" Project

Sometimes you need to work on a drawing that is not related to a Land Desktop project at all. However, working in Land Desktop requires that the drawing be attached to a project.

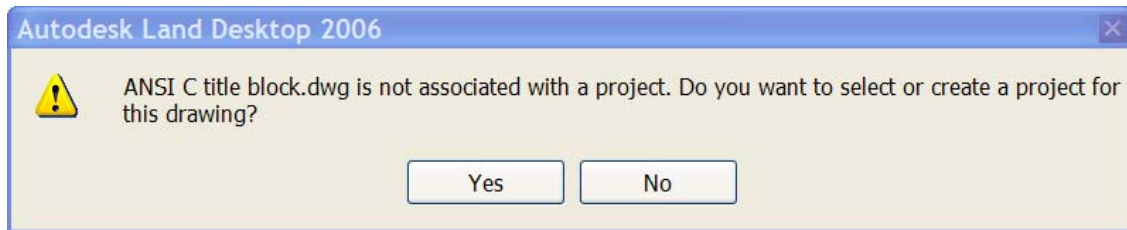
The "_SCRATCH" project is a default project and can be considered a catch-all. When you don't want to attach a drawing to a project but Land Desktop forces you to, attach to "_SCRATCH".

Opening a Non Associated Drawing

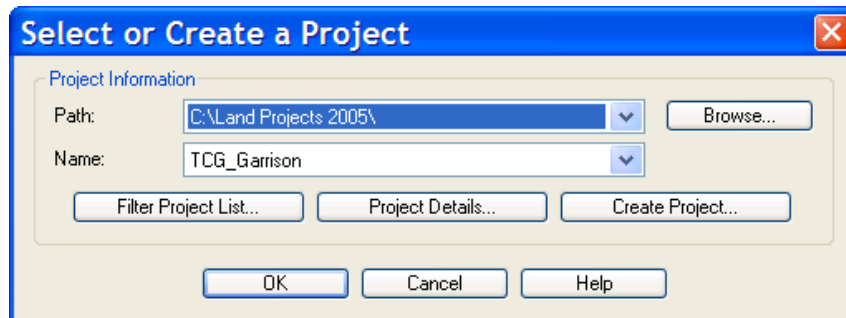
If you need to open a drawing that has not been saved in the proper location in accordance with the Project Details, use the Browse button at the bottom of the “Open Drawing: Project Based” dialog box.



After navigating to and selecting the non-associated drawing, you will receive a notification message.



If you select “Yes”, you will be prompted to select an existing or create a new project.



If you need to create a new project, make sure to set the correct Project Path before picking the “Create Project” button.

If you select “No” when prompted to associate the drawing with a project, you will most likely be attached to the “_SCRATCH” project anyway.

NOTE It is always important to look at the title bar of your Land Desktop drawing session to make sure you are attached to the correct project.

Autodesk Land Desktop 2006 [Project: TCG_Garrison] [ANSI C title block.dwg]