

That CAD Girl

jennifer dibona

website: www.thatcadgirl.com

email: jennifer@thatcadgirl.com

phone: (919) 417-8351

fax: (919) 573-0351

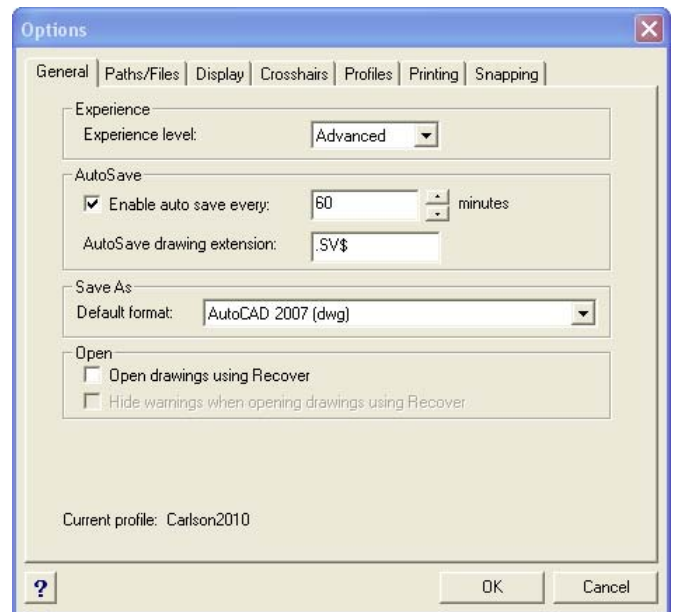
IntelliCAD Options

You can get to the IntelliCAD Options menu by:

- From the IntelliCAD menu, go to Tools → Options
- From any Carlson menu, go to Settings → IntelliCAD Options
- Right click in the command line area and select Options

The most commonly referenced Options available on the General tab are:

- AutoSave
- Default drawing format version



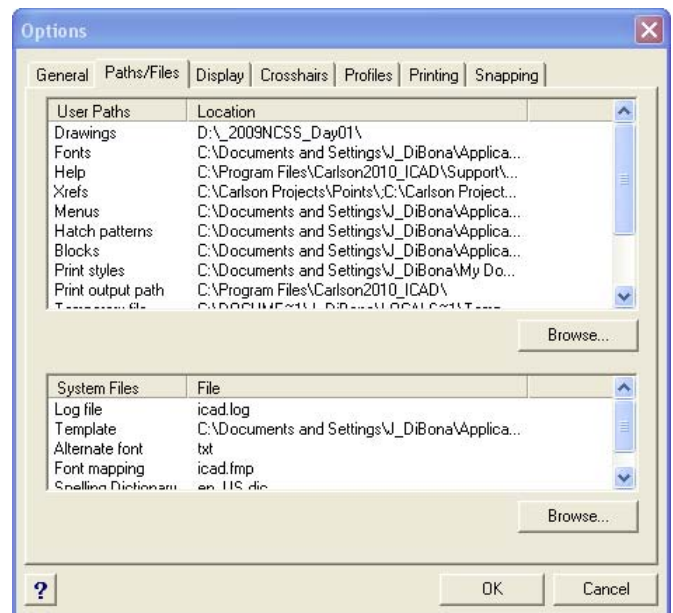
The upper section of the Paths/Files tab allows you to change the folder location and search paths for commonly stored files such as:

- Drawings
- Fonts
- Print style tables
- Drawing template

The lower section of the Paths/Files tab allows you to specify the actual files (as opposed to their saved location) to be used for these functions. Some of these settings are:

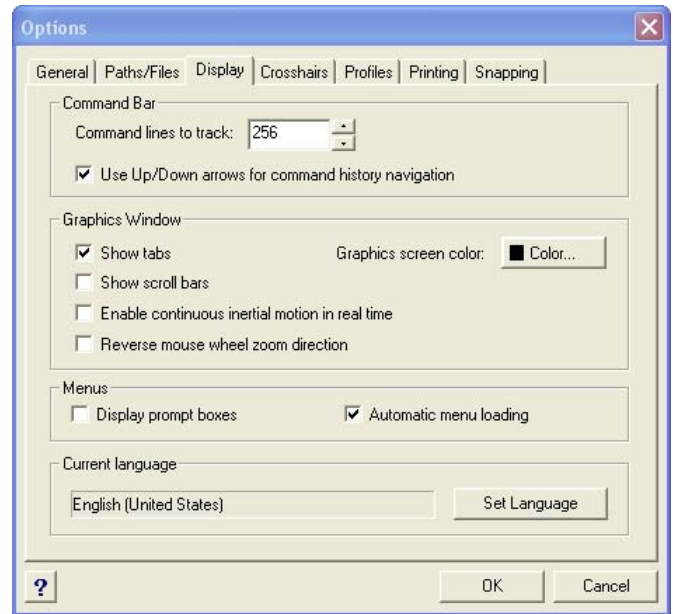
- Default drawing template file
- Alternate text font file

Note that some of these settings work with (and against, in some cases) the default settings available for Carlson Software and specified in Settings → Carlson Configure → Startup Settings.



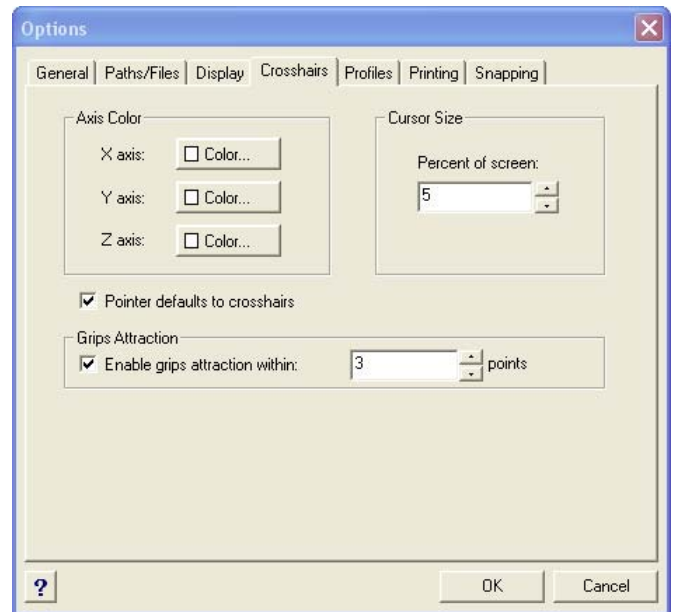
The Display tab provides many settings allowing you to adjust different elements of the graphical interface. Some of the most commonly referenced settings are:

- Command lines to track: This number controls how many lines of previous command line entries are available from the Command History/Text Screen (F2). IntelliCAD is limited to 500 lines.
- Show tabs: This determines whether the "Model" and "Layout" tabs are displayed.
- Show scroll bars: This determines whether vertical & horizontal scroll bars are available at the edges of the drawing screen.
- Display prompt boxes: Turning this option ON will provide context sensitive shortcut menus while commands are active. This setting is similar to the Dynamic Input functionality of AutoCAD.
- Graphics screen color: Use this button to set the color for both the Model and Layout drawing screens.



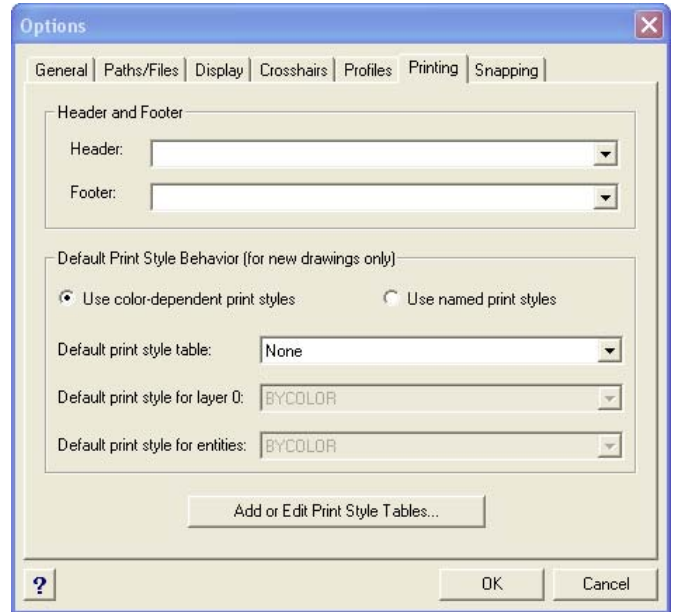
Use the Crosshairs tab to:

- Set crosshair size as a percentage of the graphic screen.
- Set grip-attraction sensitivity.



Use the Printing tab to:

- Specify Header and Footer default text. Use the drop-down to select from several pre-defined fields of document data.
- Specify whether the drawing is color-dependent or uses named print styles
- Set the default print style table
- Create new or edit existing print style tables.



Use the Snapping tab to establish the settings for ESNAP aperture and snap marker.

