

This is in regards to installing SurvCE Version 4.0 or higher on a supported Windows Mobile data collector using the file SurvCE_WindowsMobile.exe

Installing SurvCE using a USB Cable:

1) Download the file SurvCE_WindowsMobile.exe using the link below:

<http://www.carlsonsw.com/support/software-downloads/?product=SurvCE&version=4.00>

2) PLUG in the USB cable from your Data Collector to your Desktop or Laptop computer to get connected with ActiveSync.

If you have Windows XP and need to install ActiveSync click the link below. After it downloads click “Run” and then Follow the On-Screen prompts to install it:

<http://www.microsoft.com/en-us/download/details.aspx?id=15>

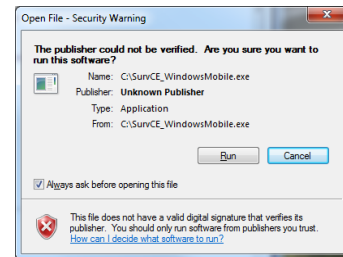
For Windows Vista or Windows 7 computers without Windows Mobile Device Center click the link below:

<http://www.microsoft.com/en-us/download/details.aspx?id=3182>

3) On the Data Collector - Tap the File tab then tap Exit to make sure you exit out of SurvCE before the Install if you are already running a previous version of SurvCE.

4) On the Desktop PC - Double click the SurvCE file that you downloaded in Step #1

- a. Click **Run** when prompted with the publisher not being verified
- b. Click **Next**
- c. Click “**I Accept the terms...**” if you agree to the License Agreement
- d. Click **Install**



5) Click **Yes** if you are prompted to re-install/upgrade

6) Let the status bar go across on the Desktop PC and **Click OK** when it prompts “Please Check your Mobile Device” then **Click Finish** on the Desktop PC.

7) On the Data Collector - **Tap OK** if it prompts with “The Previous Version will be removed”

8) Once the Status Bar finishes on the data collector it will say “Carlson Software SurvCE.CAB was successfully installed” - **Tap OK** in the bottom right to accept this message

9) To verify that you are now on the latest version:

- a. Run SurvCE
- b. Tap the Equip Tab
- c. Tap About SurvCE
- d. Check to see that the version and date on the top match what you downloaded {i.e. – Version 4.01}
- e. Tap “X” after you check your version to return to the Main Menu.

10) This completes the upgrade / install of SurvCE