

# Join Bruce Carlson for a first look at Precision 3d Culverts

If you missed this presentation, you can watch it here

---

I'm very pleased to announce that Bruce Carlson, President of Carlson Software, will be presenting an encore of his Intro to Precision 3d Culverts webinar for me on Tuesday March 31st.

Even though he'd barely finished the first webinar and I was asking him to do another one, Bruce was excited and ready for the next one! He emailed:

*Perfect—I kicked myself after yesterday's webinar for not showing multiple barrels, which shows solid cutting into the headwalls instantaneously and is very impressive, searing in the memory when people see it (since pipes cut in and re-size accurately to smaller pipes). I won't leave that one out on March 31st.*

This is a bonus to my regular monthly webinars and no previous purchase is required... It's open to all and you can register here: [Register Now!](#) for Precision 3d Culverts Webinar with Bruce Carlson

Also, don't forget that Carlson will be hosting their User Conference at the end of April. You can learn more by following this link. I'll be presenting 3 training sessions and I hope to see you all there!

From the 3/15/2015 press release:

*Just released, Carlson's revolutionary Precision 3D Design-*

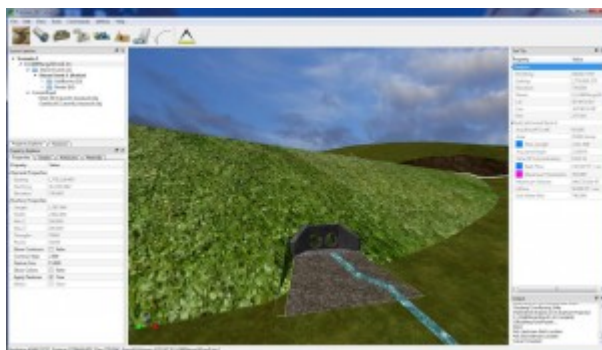
*Culverts software is an easy-to-use program for designing stormwater-related systems.*



## **CARLSON PRECISION 3D culverts**

*Much more than just a visualization tool, the software utilizes the newest technologies to allow drag and drop options for strategically placing pipes and culverts and for selecting headwalls and endwalls from an ever-growing list of manufacturers. It enables the sizing of culverts and delineation of drainage areas, plus tracking of runoff from surface models.*

*“You can place and also easily move culverts and headwalls to new locations with full dtm restoration,” says Bruce Carlson, president of Carlson Software. “Engineers will get instant feedback to changes to their on-screen design.”*

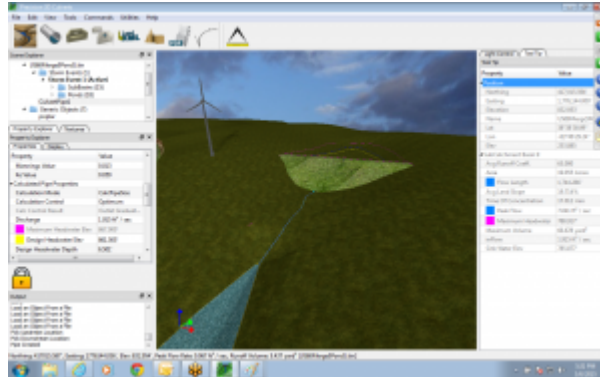


*Once a digital terrain model from CAD, Google Earth, or other source is imported, the on-screen image accurately reflects the materials represented, such as roadways, embankments,*

rocks, fields, etc.

Other innovations in the software include the ability to:

- Grade surfaces for both upstream and downstream designs;
- Delineate drainage and ponding areas;
- Determine peak flow automatically from CN and C factors



and terrain;

- Size culverts and place at low points;
- Choose from multiple barrel options;
- Output PDF reports for any selected culvert pipes having flow and headwater across multiple storm events; and
- Use for retention pond design and pond dewatering.

Carlson Precision 3D Design-Culverts is made to integrate easily into Carlson engineering software, Carlson Civil and Carlson Hydrology. It is also made to work with AutoCAD® and MicroStation® software applications.