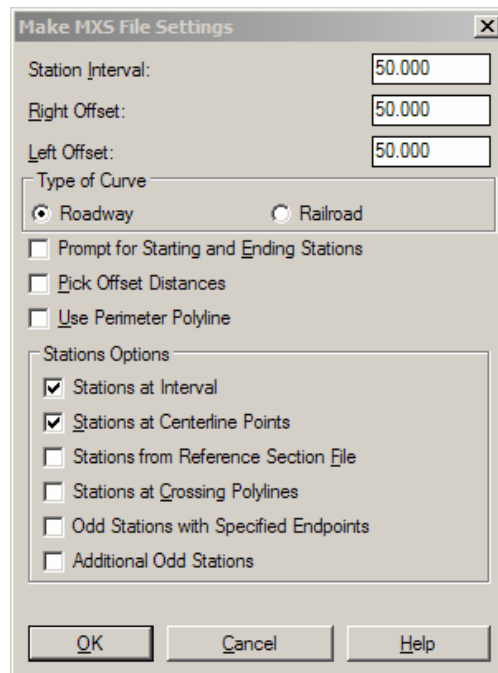


Carlson 2008 - Create Cross Sections from Contours

Create and Define Section Alignment File (.mxs file)

1. Set the Carlson Civil menu by going to Settings> Carlson Menus> Civil Menu
2. Go to Sections> Input-Edit Section Alignment
3. On the "New" tab, specify the location and name of the new file and pick "Open" to set the file
4. When prompted, select the polyline representing the centerline or type "CL" to select a .CL file that has been previously defined.
5. When prompted at the command line, enter the starting station of the section alignment and then press "Enter".
6. In the "Make MXS File Settings" dialog box, set the desired "Station Interval" and left and right offset values. Select other options as needed.
7. To extract a cross section at additional, odd stations, select the box next to "Additional Odd Stations".

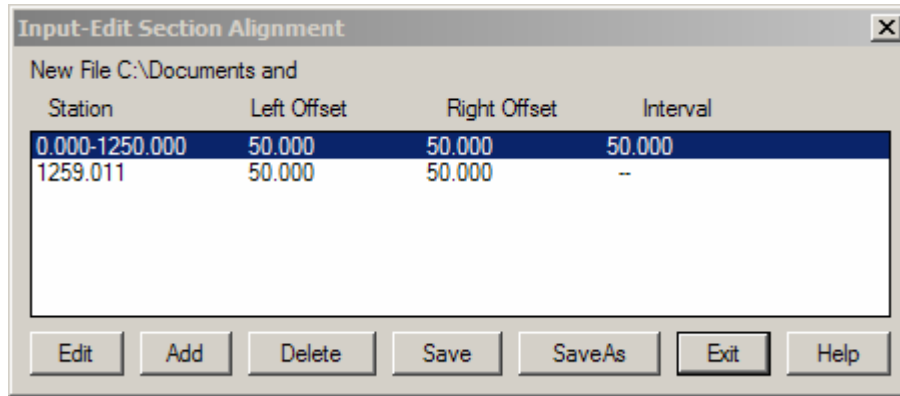


Carlson 2008 - Create Cross Sections from Contours

Create and Define Section Alignment File (.mxs file)

Continued

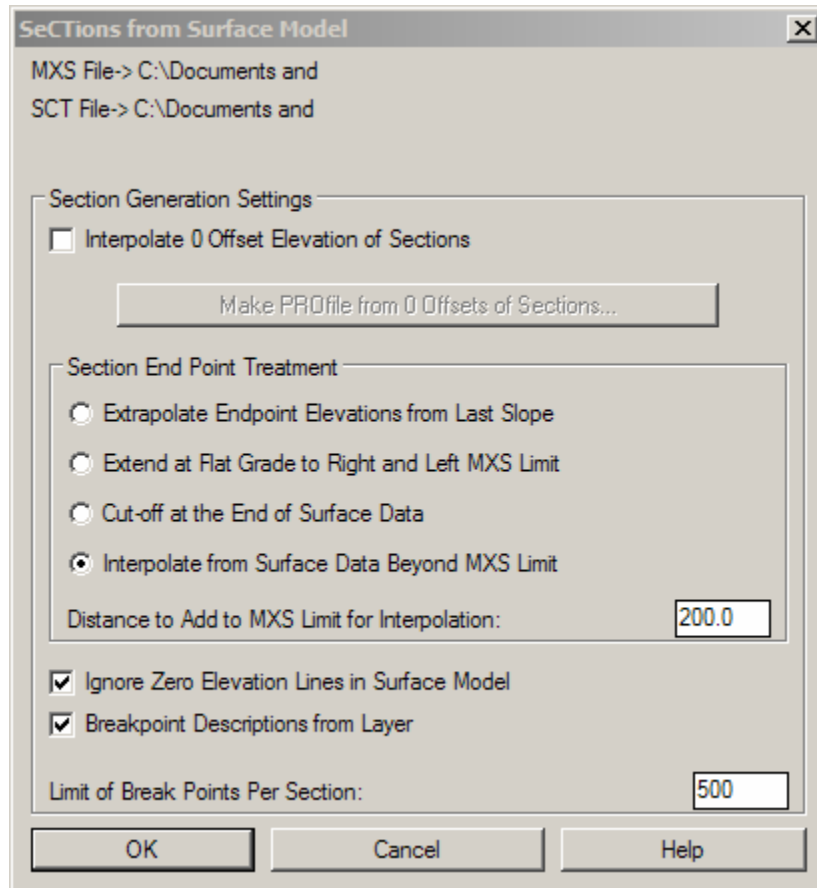
8. Review the interval and offset settings in the "Input-Edit Section Alignment" display dialog.
9. Pick on "Save" and then "Exit" to finish.



Carlson 2008 - Create Cross Sections from Contours

Create Section File (.sct)

1. Go to Cross Sections> Create Sections From...> Sections from Surface Entities
2. Select the .MXS file to process. On the "Existing" tab, select or browse to and select the desired .MXS file
3. Create the .SCT file. On the "New" tab, specify the location and name of the new file and pick "Open" to set the file.
4. Select the options shown below and any others desired.

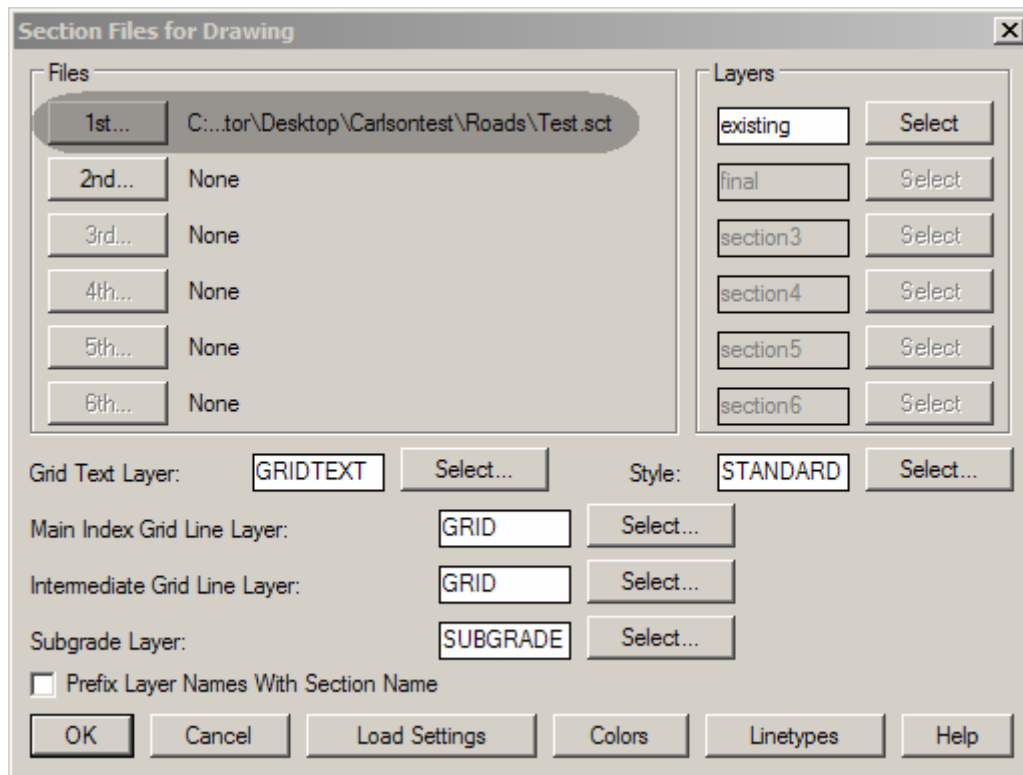


5. When prompted at the command line, place a window around all elevated contours to be used for cross sections.

Carlson 2008 - Create Cross Sections from Contours

Draw Cross Sections

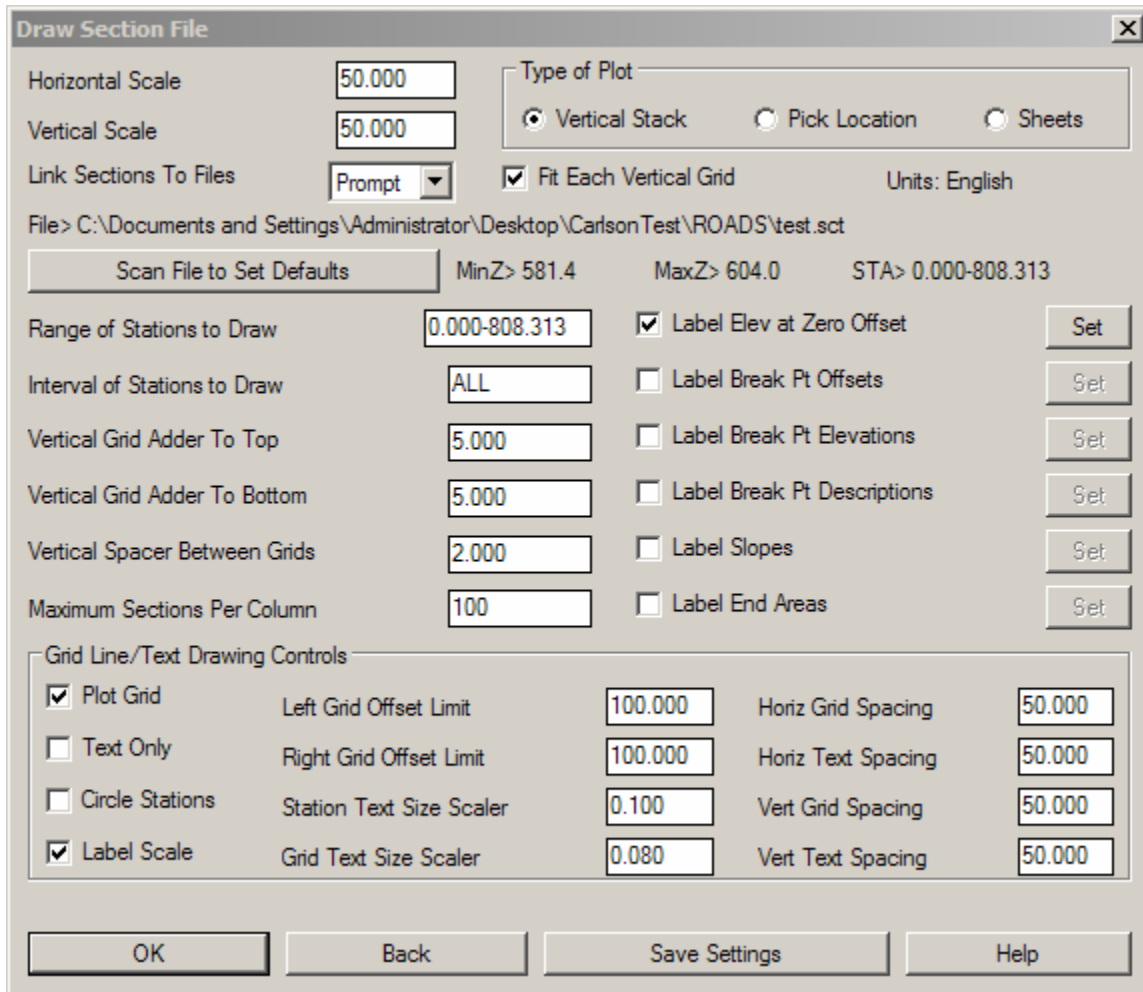
1. Go to Cross Sections> Draw Section File
2. In the "Files" area of the "Section Files for Drawing" dialog box, make sure that the correct .SCT file is specified.
3. Edit other settings as desired.
4. Click on "OK"



Carlson 2008 - Create Cross Sections from Contours

Draw Cross Sections Continued

- When the "Draw Section File" dialog appears, adjust settings as desired and then pick on "OK" to finish.



- When prompted at the command line, left pick a point on the drawing screen to start drawing cross sections.