

Did you know... About DWG Convert & True View?

As most everyone knows, every 3 years Autodesk ruins a perfectly good DWG format by introducing a new one...

With the 2013 version of the Autodesk products now released, anyone using a version of AutoCAD older than 2013 can expect to start receiving 2013 .dwg files that they can't access because its an incompatible version. This is where the DWG Convert function inside of DWG TrueView can be a lifesaver.

DWG TrueView is FREE utility available from Autodesk. They release a new version of this program every year, just like their other products.

With the True Convert utility you can convert any newer version DWG or DXF to any earlier version. I'd recommend you enable the option that creates a .bak file with the original just in case you need it later.

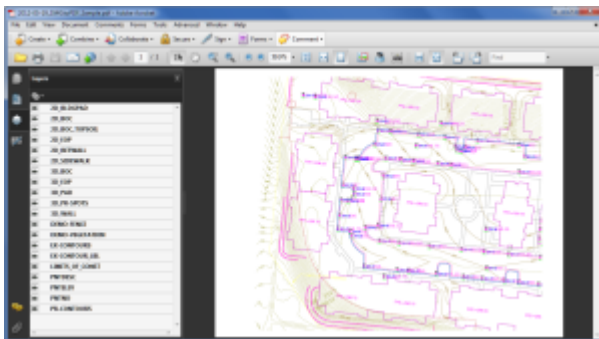
Inside the True Convert utility you can also enable several other options that will run routines such as Audit, Purge, XREF Binding, etc. during the convert process.

You can download DWG True View 2013 [here](#).

Did you know... about DWG to PDF?

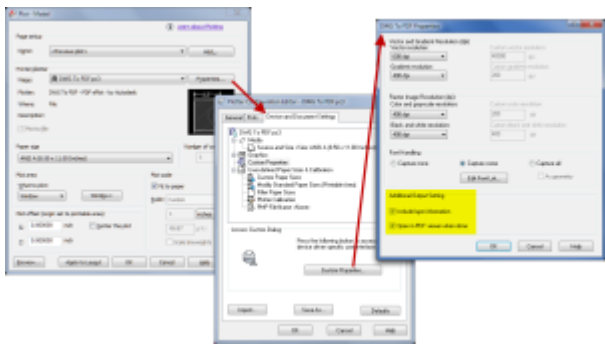
Since I have to send so many files to different people in PDF format, I purchased Adobe Acrobat several years ago. Once installed, "Adobe PDF" shows up in my list of available printers just like my HP or Brother printers do. There are also several other programs available online that allow you to create a PDF printer. Although I've never used them, I've heard good things about CutePDF and Sourceforge PDF Creator and I've used Win2PDF in the past. Each of these have a free version but you may end up getting a watermark or footer or 2nd page that states you're using a Free copy.

Any of these can be installed and will be shown as an available printer in the Plot dialog box of AutoCAD or IntelliCAD. Several years ago AutoCAD started including a DWG to PDF.pc3 file allowing AutoCAD users to use that tool rather than having to purchase a separate application to create PDFs. One advantage of using the DWG to PDF is that there is an option to save all the layers used in the DWG with the PDF file. With this setting enabled, anyone viewing the PDF through a PDF viewer has the ability to make one or more layers invisible. See the image below for an example:



While this is a neat feature, you might not always want your

list of layers to transmit with your PDF. If not, it's easy enough to change the option. In the **Plot** dialog, set the current plotter to DWG to PDF.pc3 and then pick the **Properties** button to the right. Under the **Device and Document Settings** tab, you can change several options such as available paper sizes. You can also select the "Custom Properties" item in the tree for special options that are unique to the "printer". You can see in the image below that this is where you can find the option for whether or not to "Include layer information".



Did you know... About the CHSPACE command?

The CHSPACE (Change Space) command is simply a lifesaver for anyone using paper space to put together your project drawings.

In AutoCAD, CHSPACE can be typed in at the command line or found in the Modify menu or ribbon panel. In Carlson with IntelliCAD, CHSPACE can be typed in or easily accessed from the right-click context menu after the items have been selected.

This command will move entities from model space to paper space or vice versa. You must be working in model space through paper

space in order to move entities from model to paper – it will not work directly from model space. The nice thing about the command is that it will scale the entities (to account for the differences in scale between model and paper space) so you don't have to. The AutoCAD version of this command actually performs a MOVE command on the entity whereas the IntelliCAD version gives you the option of moving the original or making a copy to the other space. If you're using AutoCAD, make a copy of the entity before performing the CHSPACE command.

I find this command most handy when I have a linear project such as a water line or force main extension project with many sheets of plan and profile that change direction. In model space, I make multiple copies of the North arrow and place them along the meandering alignment. Then, from paper space, I make each viewport active and use CHSPACE to move one of the copies to the paper space sheet.

That CAD Girl – April 2012 Newsletter

In case you missed it, here is our April 2012 Newsletter...

Thank you to the Richmond AutoCAD Manifest (RAM)

I'd like to thank Art Thomas and the Richmond Virginia AutoCAD User Group for inviting Jeremy and me to demonstrate Carlson Software and data collection last night. Our hour-and-a-half long presentation covered the basic tools and Survey, Civil and GIS specific features of the Carlson products.

The RAM User Group has been active for 20+ years and has a lot to offer CAD users in the central Virginia area. Their meetings are usually on the 3rd Wednesday of each month and start after work at 5:30. If you're based in the Richmond area, I'd highly recommend that you join up with them.

Did you know... About Coordinate Display Toggles?

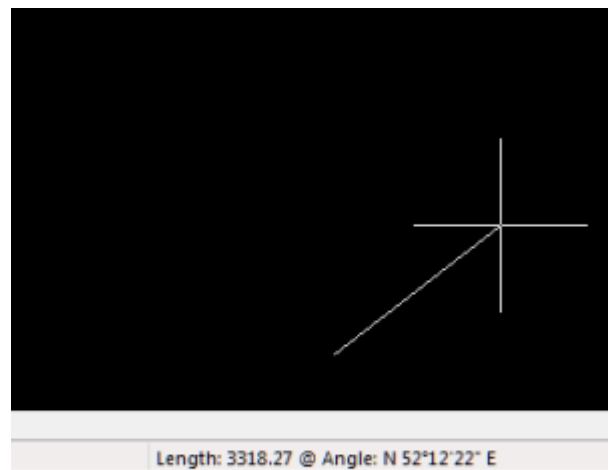
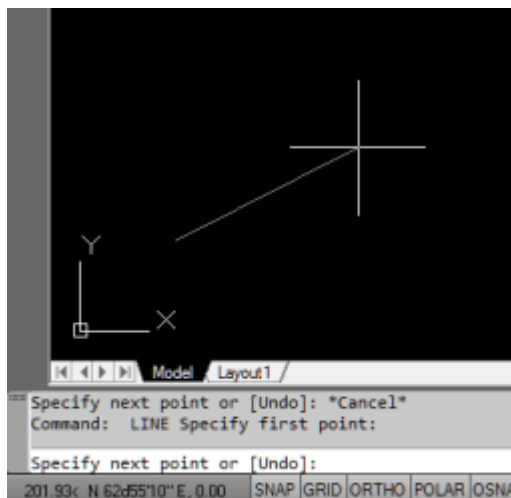
Did you know that, when you're in AutoCAD or IntelliCAD, you have a couple of different options when it comes to displaying the coordinate position of your crosshairs?

For instance, when you're NOT in a command, you have two options for displaying the coordinate position of your crosshairs as it moves across your screen: On or Off. If the coordinate display is toggled ON, then the X, Y and Z position (rectangular coordinates) of your crosshairs are displayed and if it's OFF,

then the X, Y and Z display is frozen and doesn't update as your mouse moves.

However, if you are currently in a command that requires two points be picked to specify an angle and distance (commands such as Line or Move, etc), you have a 3rd coordinate display available to you: polar coordinates. Unlike rectangular coordinates that display X, Y and Z position, polar coordinates report a distance and angle from the original point. For instance, when you start the Line command you can toggle the coordinate display so that rectangular coordinates are ON or OFF. But, after picking the first point of the line, you can toggle the coordinate display so that rectangular coordinates are ON, rectangular coordinates are OFF or that polar coordinates are ON.

The image below on the left shows the polar coordinate display in AutoCAD and the IntelliCAD version is shown below on the right:



To toggle the coordinate display in newer versions of AutoCAD (since 2009?) double-click on the coordinate display. In older versions of AutoCAD and in IntelliCAD, the F6 button toggles the display.

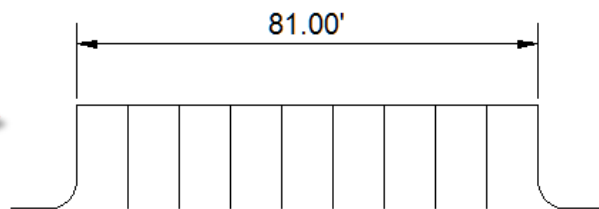
Did you know... How easy it is to spruce up your dimensions?

Anyone who has worked with AutoCAD for any length of time can usually create a standard dimension object. However, if you pay

close attention to two items in the Object Properties dialog box, you can get very creative with the way simple dimensions are displayed.

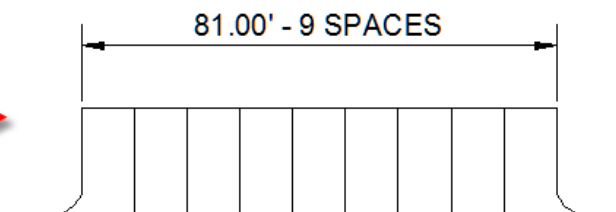
For instance, in the image just below, you can see that there are two Object Properties items highlighted in yellow. One is the “Measurement” and the other is the “Text override”. The Measurement is the measured distance between the dimension definition points (DEFPOINTS) and is read-only. You can also see that the current value for Text override is “< >”. Whenever the less-than and greater-than signs are shown as the Text override value, the Measurement will be substituted for the symbols when displayed in the drawing.

Text position X	218.1896
Text position Y	4.7700
Text rotation	0.0000
Text view direction	Left-to-Right
Measurement	81.0000
Text override	< >



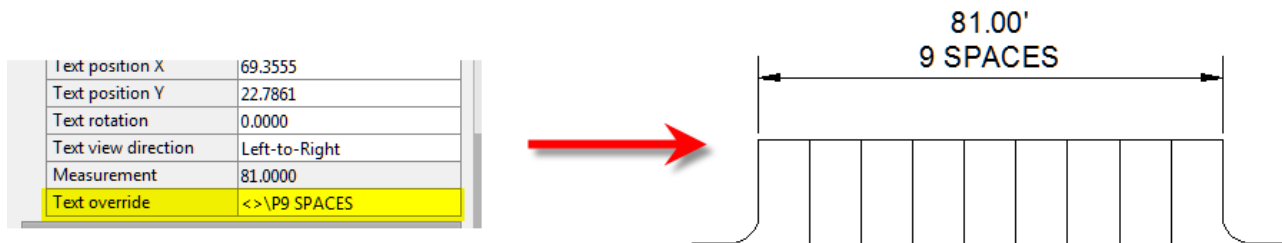
To add just a little more detail to the dimension, you can add descriptive text before or after the “< >” in Text override as shown in the next example below. As long as you keep the “< >”, the correct measured distance will always be displayed as part of the dimension text:

Text position X	69.3555
Text position Y	-15.5952
Text rotation	0.0000
Text view direction	Left-to-Right
Measurement	81.0000
Text override	< > - 9 SPACES



And, making it fancier... In the example below, I have added a “P” between < > and “9 SPACES”. This is like pressing Enter to go to a second line and has the effect of stacking two lines of text

above the dimension line:



And, finally, one more option. Rather than entering “P”, if you enter “X” as part of your Text override, you will stack the text partially above and partially below the dimension line.



The “P” and “X” modifiers can also be used in combination to create 3 or more lines of text and allowing you to control how many lines appear above and how many appear below the dimension line.

Tips & Tricks for Setting Points in Carlson – Webinar

Yeah, you know all of them already... Unless you don't!

Carlson has a lot of great tools that are available for setting

points but some of them are a little hidden. I will be covering some features in Carlson Survey and Carlson Civil that will, hopefully, help you increase your productivity.

Register Now! Wednesday, February 29th – Tips & Tricks for Setting Points in Carlson

Did you know... About Temporary Overrides?

There are others, but my two favorites are:

- Holding **Shift** while in a Draw or Modify command allows you to override your current ORTHO setting.

So, if you're drawing a line and ORTHO is Off, holding **Shift** will temporarily turn ORTHO On. As soon as you let up on the **Shift** key, ORTHO will be Off again. Likewise, if ORTHO is On, holding **Shift** will temporarily turn it Off.

- Holding **Shift** while in the Fillet command allows you to override your current Radius setting and apply a Radius of 0.0 between the two selected entities.

So, if you're drawing a parking lot and find yourself constantly changing your Fillet Radius between 0.0 and another value to create both sharp and rounded corners, leave the Radius set to something other than 0.0 and just hold **Shift** when you pick the two entities to apply a 0.0 Radius.

These Temporary Overrides are available in all “flavors” of AutoCAD as well as in IntelliCAD.

IntelliCAD Webinar – Do Over

Last week I presented a webinar sponsored by Carlson Software on the topic “Updates and Overview of IntelliCAD 7”. Unfortunately we had some technical difficulties and didn’t get a complete recording to post to the Movies collection on Carlson’s website.

For those who are interested, we will be re-doing the webinar on Thursday, March 29th. By that time we expect to have additional updates and improvements to announce.

Keep an eye on this site to register for the next IntelliCAD webinar

You can register for these future webinars by clicking the link below:

- Tips and Tricks for Setting Points
- Debunking the “Carlson Isn’t Dynamic” Myth
- Carlson Annotation and Labeling