

That CAD Girl

Frequently Asked Questions

[FAQ312] What features & menus are in Carlson SurvCE and SurvPC? (a running thread)

FAQ: What are the latest improvements in Carlson Software?



Features and Benefits of SurvCE and SurvPC 5.x

Carlson SurvCE is the first choice in data collection software, combining advanced functionality, ease-of-use, and sheer capability:

- Get the software that supports a wide variety of equipment, old or new.
- Enjoy excellent, free (and prompt) technical support
- Be heard – Carlson listens to its customers' input for new

features or drivers for all of its products

Carlson SurvCE is a complete data collection system for Real Time (RTK) GPS and Total Stations with in-field coordinate geometry. It supports the widest range of popular and new release RTK GPS and conventional/robotic total stations.

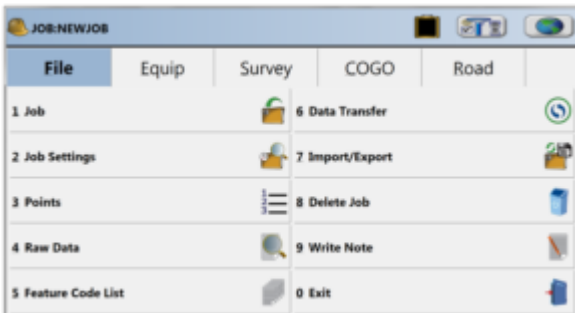
SurvCE and its full-windows companion **SurvPC** can be configured with various combinations of 4 modules: Total Station (Basic), Robotics (requires Basic), Carlson GPS and Advanced Roding (Requires Basic or other Carlson GPS).

Refer to this FAQ to see if your hardware is supported in SurvCE & SurvPC

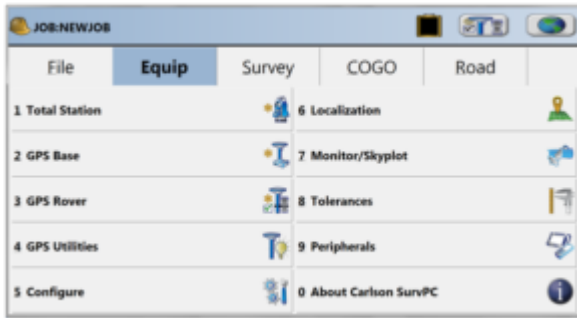
Refer to this FAQ for system requirements

Menus in SurvCE and SurvPC 5.x

File Menu



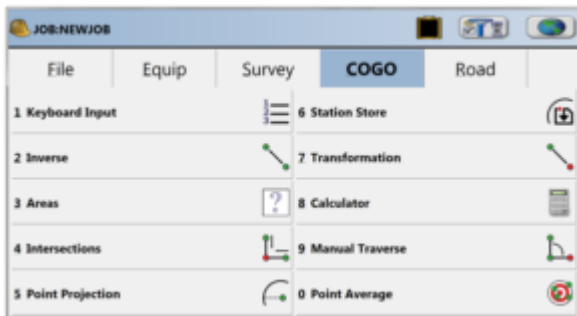
Equip Menu



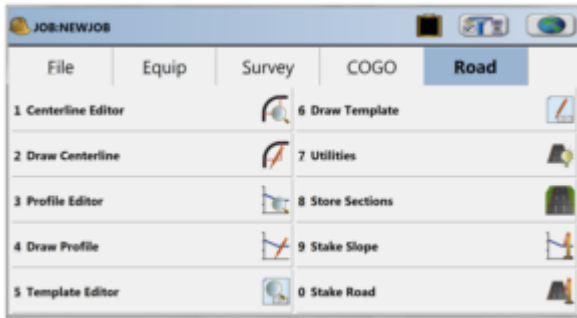
Survey Menu



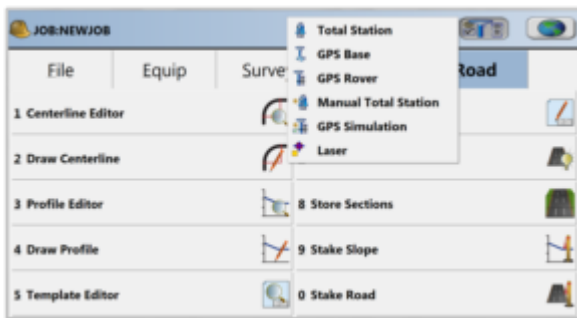
COGO Menu



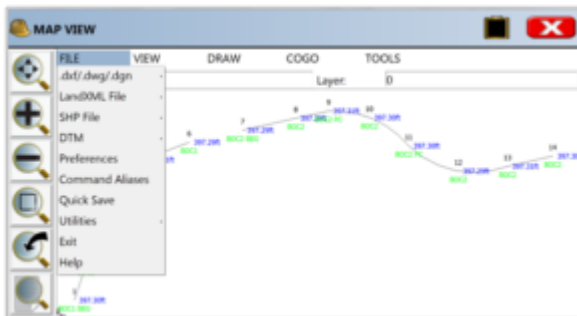
Road Menu



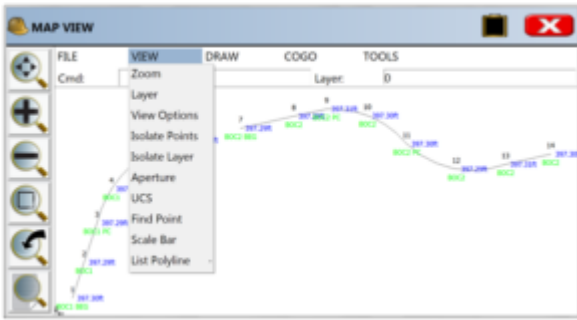
Select Equipment



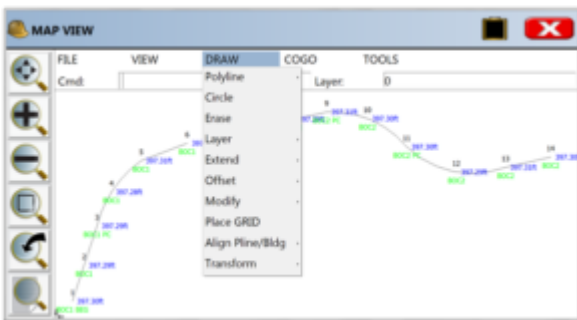
Map View | FILE Menu



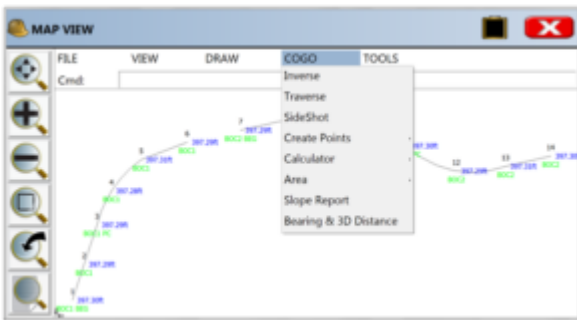
Map View | VIEW Menu



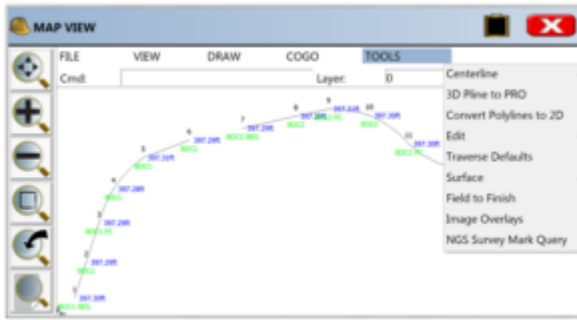
Map View | DRAW Menu



Map View | COGO Menu



Map View | TOOLS Menu



That CAD Girl

If you find the material on this website helpful, please consider supporting That CAD Girl or one of our Trusted Partners, such as Carlson CAD Solutions, by purchasing or referring others to us for CAD and Carlson Software support and training.